



SWG3 PRODUCTION SPEC

Document owner	Dave Sneddon
Department	Production
Last updated	January 2024
Contact	tech@swg3.tv + dave@swg3.tv



CONTENTS

Important Information	Page 3
SWG3 complex	
SWG3 Ground Floor Map	Page 4
SWG3 Upper Floor Maps	Page 5
SWG3 spaces	
Galvanizers Floor Plan	Page 6 & 7
Galvanizers Tech Spec	Page 8
TV Studio Floor Plan	Page 9
TV Studio Tech Spec	Page 10
Warehouse Floor Plan	Page 11
Warehouse Tech Spec	Page 12
Poetry Club Floor Plan	Page 13
Poetry Club Tech Spec	Page 14
SWG3 local area	
SWG3 Local Area Map	Page 15





KEY INFORMATION

GALVANIZERS AND TV STUDIO BACKSTAGE AREA

(Galvanizers has dressing room priority)

- 3 x dressing rooms
- 1 x production office
- 4 x toilets
- 4 x showers
- 1 x laundry room

WAREHOUSE AND POETRY CLUB BACKSTAGE AREA

(Warehouse has dressing room priority)

- 1 x production office
- 2 x dressing rooms
- 1 x shower in main dressing room
- 1 x toilet in main dressing room

PARKING INFORMATION

Please ask for parking information in regards to your show with your venue contact. We can offer 32/3 Ceeform power for buses in 3 different locations.

NON-UK POWER

We have no European or US Power Adapters. We can only provide UK 230v Power.

AVAILABLE MICROPHONES PER ROOM

- 2 x ShureB91
- 2 x ShureB52
- 4 x ShureSM57
- 8 x ShureSM58
- 4 x SennheiserE604
- 2 x SennheiserE609
- 3 x AKG 430
- 3 x ATM 450
- 6 x Mono KT DI
- 2 x Stereo KT DI

AVAILABLE DJ BACKLINE PER ROOM

- 1 x Pioneer DJM900 Nexus Mixer or Allen & Heath Xone92 Mixer
- 2 x Pioneer CDJ2000 Nexus CDJs
- 2 x Technics 1210 MkII Turntables
- 2 x Ortofon DJ Catridges
- 1 x Netgear GS105 LAN Hub

ADDITIONAL DJ BACKLINE

- 1 x Sennheiser E835 G4 Radio Mic
- 1 x DJM900NX2
- 4 x CDJ2000NX2

ADDITIONAL PROMOTER COSTS

STANDARD GIG LOAD IN TIMES

Galvanizers	12pm (£65+VAT per hour for early load in)
TV Studio	1pm (£65+VAT per hour for early load in)
Warehouse	3pm (£45+VAT per hour for early load in)
Poetry Club	4pm (£17+VAT per hour for early load in)

MERCH CONCESSION

Please note that there is a concession to sell merchandise within the Galvanizers, TV Studio and Warehouse venues. This is charged at 12 pence + VAT per ticket sold and will be settled post-show.

The invoice must be settled at the end of the night and we cannot invoice post-show. Those who do not have the facilities to pay on the night will not be permitted to sell merchandise at their show.

TOWELS

Towels can be supplied by the venue for £1.50 + VAT per towel.

CONFETTI CLEAN UP

Confetti clean up fee is £250 + VAT.

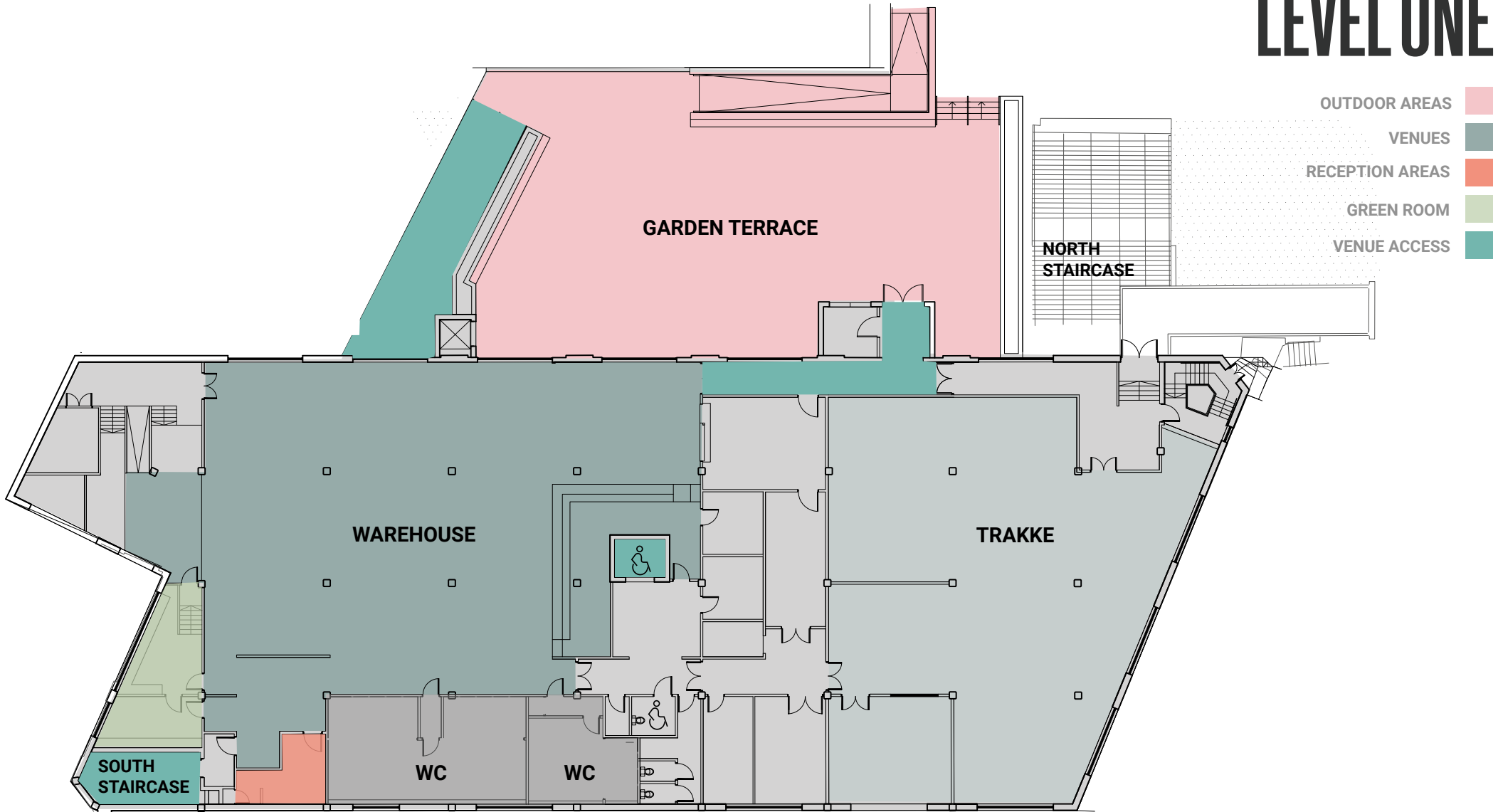


SWG3 COMPLEX GROUND LEVEL



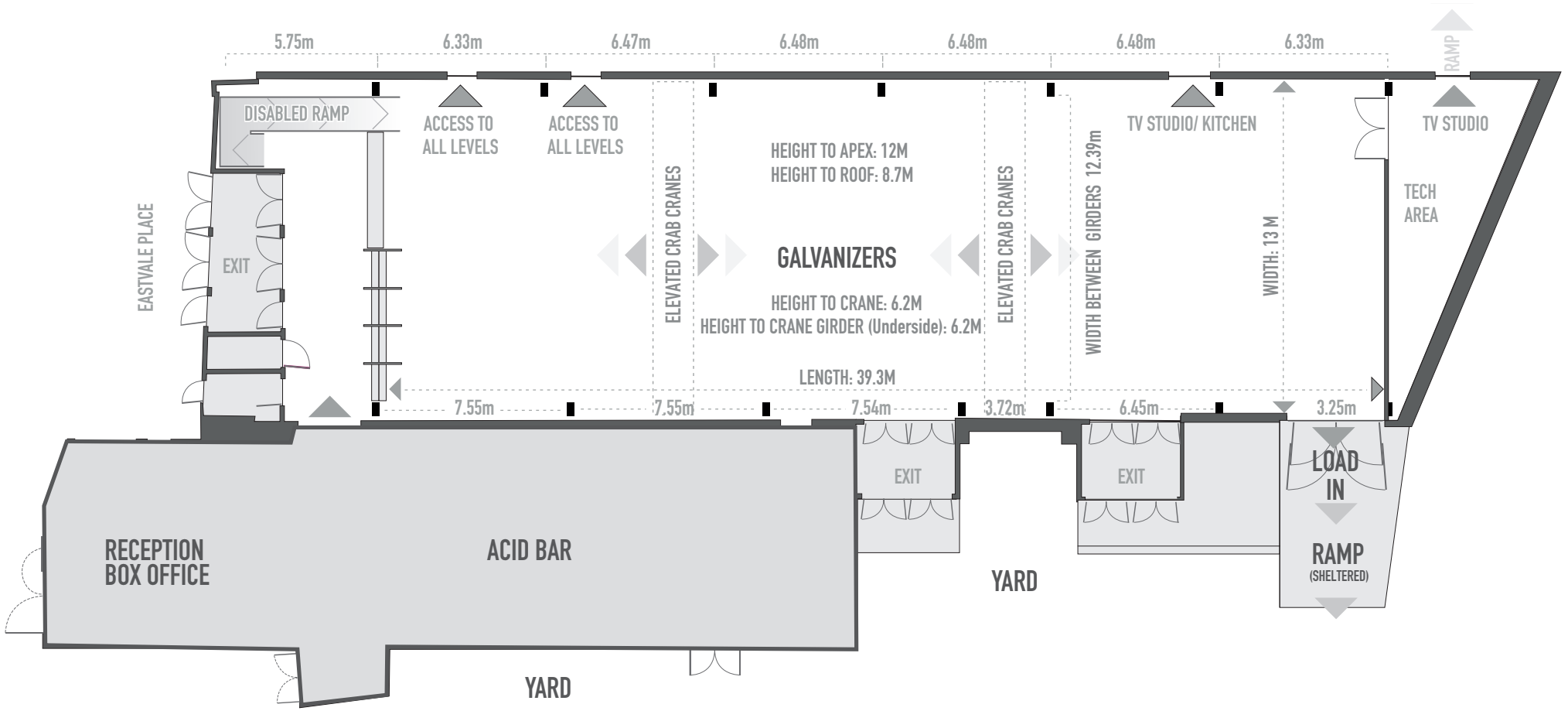


SWG3 COMPLEX LEVEL ONE





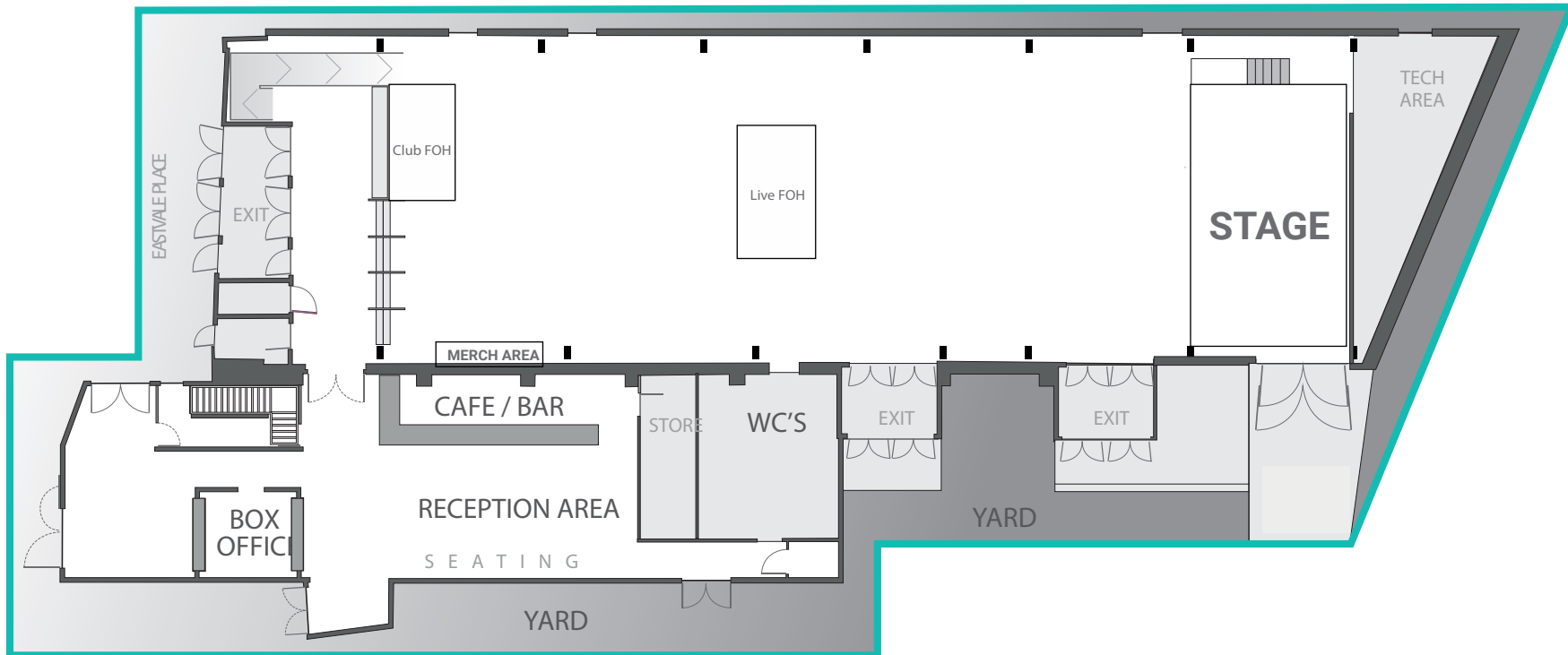
MEASUREMENTS GALVANIZERS





FLOOR PLAN GALVANIZERS

Standing	1250
Seated	600
Dinner	500
Stage width	9.8m (32ft)
Stage depth	6.1m (20ft)
Stage height	1.5m (4.9ft)
Clearance	4.5m





TECH SPEC

GALVANIZERS

PA

D&B V Series Line Array (Array Processed) consisting of:
6 x D&B V8 Per Side
10 x D&B V-SUB Array
2 x D&B Y7P Front Fill
2 x D&B V7P Delays
5 x D&B D80 Amplifiers

MONITORS (LIVE)

10 x D&B M4 Wedges
2 x D&B B6 Subwoofers
4 x D&B D12 Amplifiers

MONITORS (CLUB)

4 x B6 Subwoofer
2 x M4 Tops
1 x D&B D80 Amplifier

CONSOLES

Midas Pro 2
Midas Pro 2c
2 x Midas DL251 Stage Box
4 x Cat5e Multicore (House Desk)
1 x 32A Power for FOH

LIGHTING

8 x Robe Mega Pointe
12 x Robe Spider
6 x Clay Paky Stormy CC
8 x TMB 2-Cell Molefay
1 x Chamsys MQ80 Lighting Console
1 x Chamsys Extra Wing
3 x 5 Pin Hardline DMX for house control
1 x Available Cat5e Line
1 x 16a Power available at FOH

RIGGING

3x Total Fabrications Super Heavy Duty Truss at 13m as Mothergrid (Locations rear of stage, Front of Stage and Back of room)
Centre point loading of 1 tonne
UDL 2 tonne
2x Moveable Cranes
Centre Point Load of 1 Tonne
UDL 2 Tonne

Audio Points:
2x 1t GIS DB Motor

STAGE TRUSSING

1x 10m Milos M390 Rear Truss on 2 x 1t GIS DB Motors
1x 8m Milos M390 Front Truss on 2 x 500kg GIS DB Motors
We have no Mid Truss for the stage
Backdrop Bar is 8m wide 5.5m drop to stage

POWER

Visiting Lighting Power 125/3 or 2 x 63/3
Visiting Audio Power 1 x 32/3
13a UK Power available for the stage and at FOH

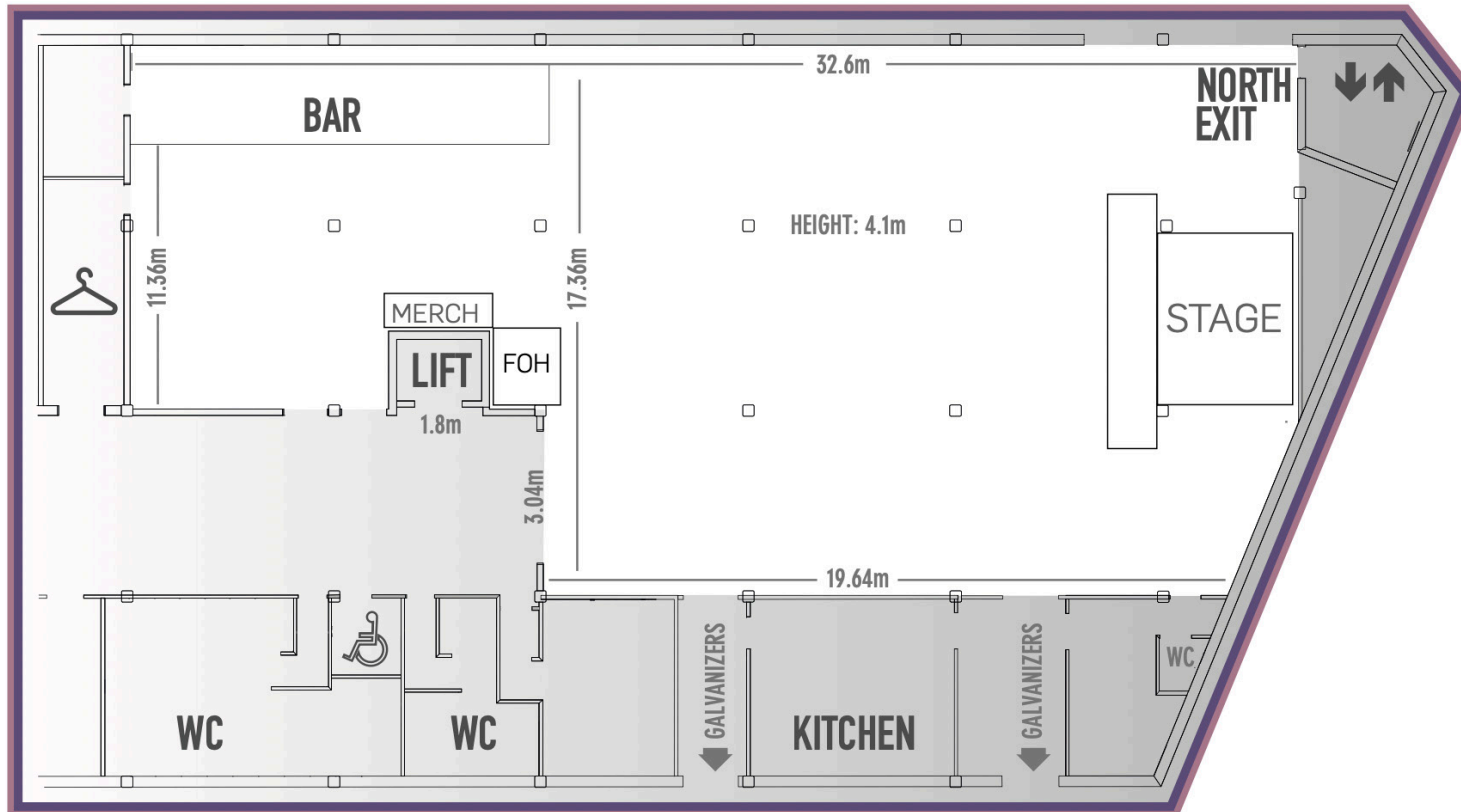
NOISE RESTRICTION

We have TenEazy Noise monitoring within the Galvanizers due to nearby residents. Our limit within the room at FOH is 100dba over 15 Minutes and 110db Linear at 63hz Octave Band.

We have noise monitoring at the site boundary with is a limit of 80db @ 63hz Octave band.



FLOOR PLAN TV STUDIO



Standing	1000
Seated	300
Stage width	4.9m (16ft)
Stage depth	3.6m (12ft)
Stage extension width	7.3m (24ft)
Stage extension depth	1.2m (4ft)
Height from floor to stage	1m
Height from stage to ceiling	2.7m
10 x 1m sections of steel mojo	



TECH SPEC TV STUDIO

PA

D&B V Series Line Array
2 x D&B V8 Per Side
2 x D&B V12 Per Side
8 x D&B V-SUB Array
2 x D&B Q7 Front Fill
2 x D&B Y7P Delays
2 x D&B 30D Amplifiers
1 x D&B D80 Amplifier

MONITORS (LIVE)

8 x D&B M4 Wedges
2 x D&B B6 Subwoofers
4 x D&B D12 Amplifiers

MONITORS (CLUB)

2 x D&B B6 Subwoofer
2 x D&B M4 Monitors
1 x D&B D80 Amplifier

CONSOLES

Midas Pro 2
Midas Pro 2c
Midas DL251 Stage Box x 2
2 x Cat5e Multicore for House Desk

LIGHTING

12 x Chauvet Rogue R1 Spots
12 x Chauvet Rogue R2 Washes
4 x Martin Atomic 3000
2 x Source 4 Jr
1 x Chamsys MQ80 Lighting Console
1 x 5Pin DMX Line to FOH for House
1 x 5Pin DMX Line to FOH for Touring

POWER

Available for touring production:

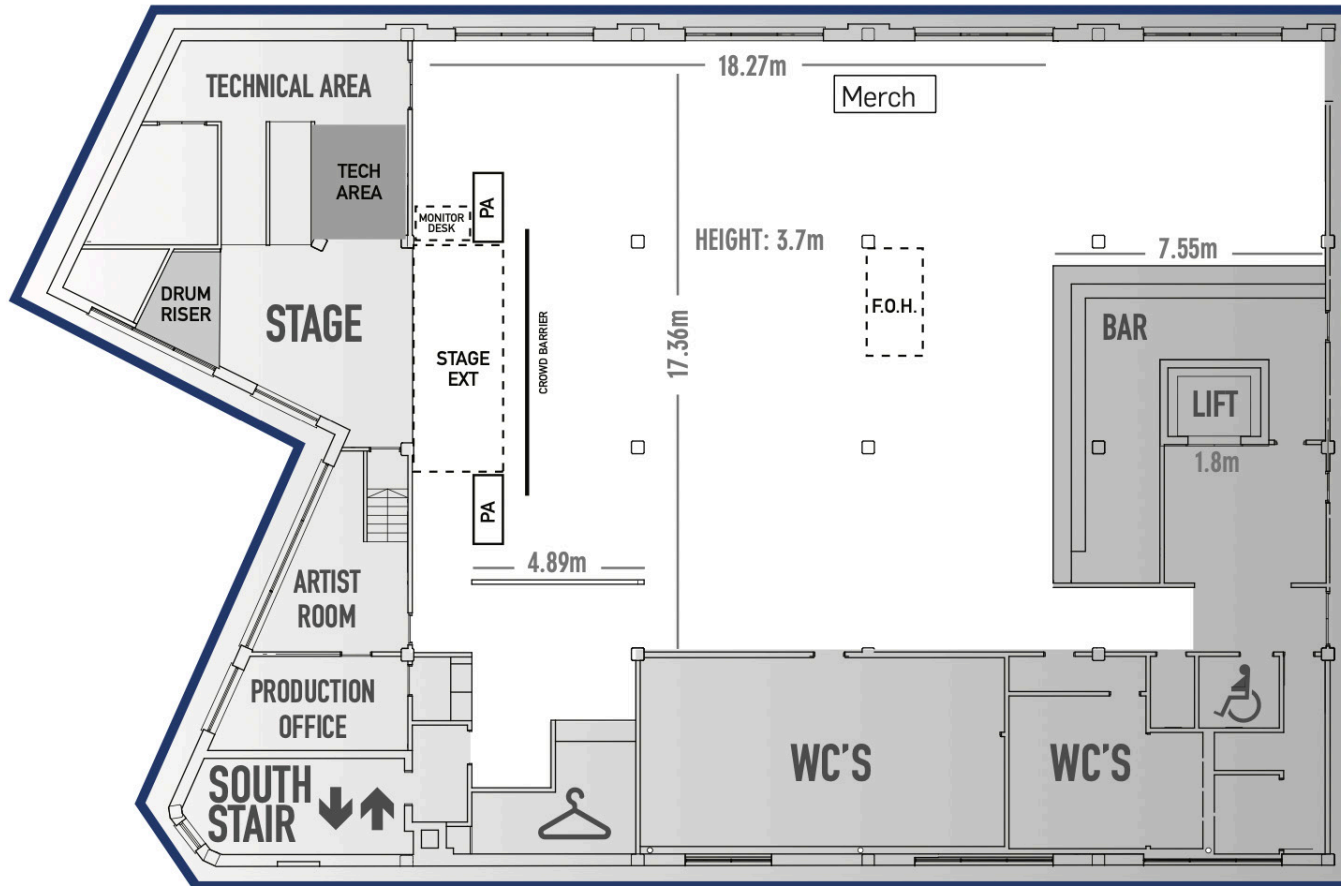
1 x 63/3 Ceeform
1 x 32/3 Ceeform
2 x 16a Available at FOH
13a UK power available at Stage and Foh

RIGGING

6 x Milos Quatro M290V Truss (200kg UDL)
57 x Scaffold Bars (50kg UDL)
2 x PA Rigging Point (200kg UDL)
Backdrop Wire is 4.8m wide and 2.7m drop to stage



FLOOR PLAN WAREHOUSE



Standing	500
Seated	200
Stage width	5.85m
Stage depth	3.8m
Stage extension width	3.2m
Stage extension depth	2.5m
Height from floor to stage	1m
Height from stage to ceiling	2.7m
8 x 1m sections of steel mojo	
Stage extension with 6 sections of 8'x4' steel deck along the front of the fixed stage	



TECH SPEC WAREHOUSE

PA

D&B Q Series PA consisting of:
8 x D&B Q1 Tops
4 x D&B B2 Subs
4 x D&B Q Sub
2 x D&B Q7
6 x D&B D12

CONSOLE

1 x Midas Pro 1 (Monitors from FOH)
1 x Midas DL251 Stage Box
3 x CAT5e Multicore

MONITORS (LIVE)

6 x D&B M4 Wedges
4 x D&B D12 Amplifiers
1 x D&B B6 Subwoofers

MONITORS (CLUB)

2 x D&B B6 Subwoofers
2 x D&B M4 Monitors

LIGHTING

6 x Chauvet Rogue R1 Spots
6 x Chauvet Rogue R2 Washes
1 x Martin Atomic 3000
1 x Chamsys PC Wing and Touch Screen laptop

POWER

1 x 32a Three Phase Socket (Touring)
2 x 32a Socket (House Equipment)
5 x 16a Socket (House Equipment)

13a and 16a Power Available on stage and at FOH for touring production.

RIGGING

4 x 5m Trilite Truss (120kg UDL)
2 x 3m Trilite Truss (90kg UDL)
2 x 2m Truss (60kg UDL)
20 x Scaffold Bars (40kg UDL)
2 x PA Rigging Point (300kg UDL)

LOAD IN

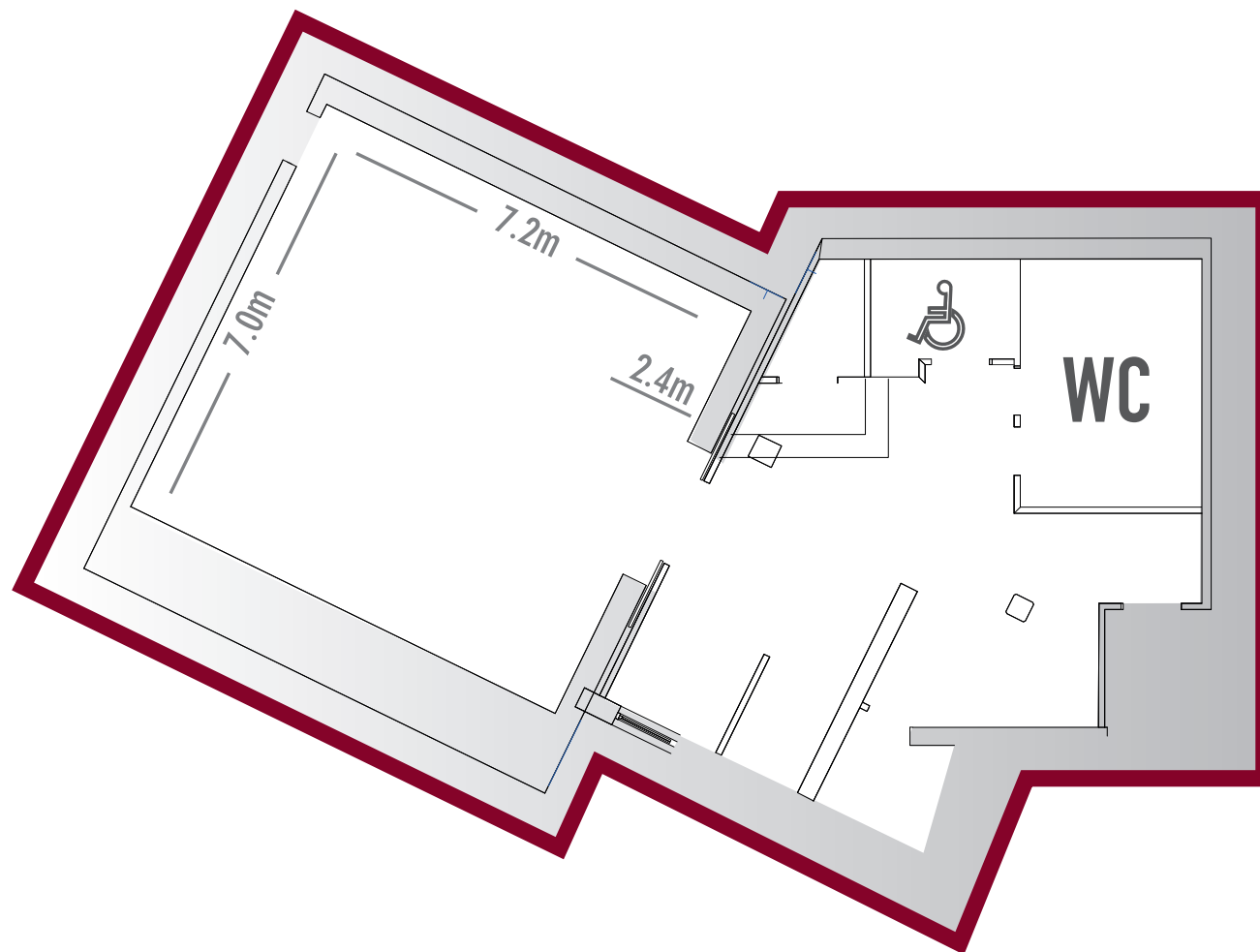
Load in for the Warehouse is conducted through the lift from the ground floor. For equipment that is larger than these dimensions we have a Production Entrance to the north of the building. 2.4m wide x 2.4m high (8'x 8').

Warehouse lift dimensions

Door	1.1 m wide x 1.97m high (3'7" x 6'6")
Carriage	1.9m wide x 1.6m deep x 1.9m high (6'4" x 5'6" x 6'6")
Max load	800kg



FLOOR PLAN
THE POETRY CLUB



Club nights	129
Gigs	100
Seated	40
Stage width	5.2m
Stage depth	1.8m
Stage height	0.24m



TECH SPEC

THE POETRY CLUB

FOH SYSTEM

2 x D&B C6 Top
4 x D&B C4 Sub
2 x D&B D12
2 x EV Evid 4.2 (Bar Area)
1 x Midas M32R (16Ch)
4 x Yamaha DXR12 Monitors

LIGHTING

1 x Chamsys PC
6 x Chauvet Intimidator Trio
2 x Lanta Tri LED Par Cans
6 x Pulsar ChromaZone CZ6 LED Lights
4 x Lanta Saturn Quad Beam
2 x Lanta Lasers
1 x Martin Atomic Strobe
1 x Le Maitre Neutron XS Hazer
1 x Antari Z-800 Smoke Machine (Train)
2 x Optikinetics Solar 250 (Bar)

VIDEO

1 x 100" 16:9 Projector Screen (Stage)
1 x OPTOMA ZH403

POWER

2 x 16a Socket (DJ Booth)
4 x Dual Gang 13a Sockets (DJ Booth)
1 x Dual gang 13a Socket (Mezzanine)

RIGGING

6 x Milos Quatro M290V Truss (200kg UDL)
5 x Scaffold Bars (40kg UDL)

